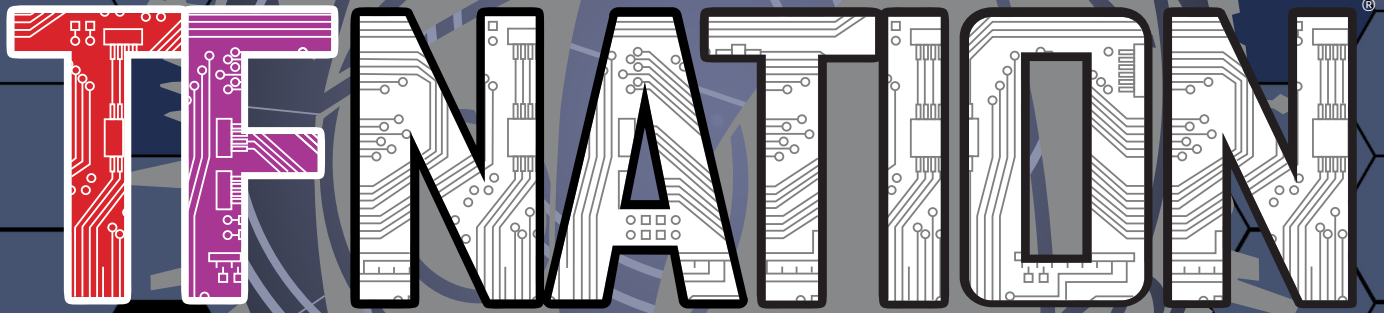


**ATTENDING**

The logo for TEFNATION features the word in a stylized, blocky font. The 'T' and 'F' are filled with red and purple circuit patterns. The 'E' is white with a black outline and contains a circuit pattern. The 'N' is white with a black outline and contains a circuit pattern. The 'A' is white with a black outline and contains a circuit pattern. The 'T' is white with a black outline and contains a circuit pattern. The 'I' is white with a black outline and contains a circuit pattern. The 'O' is white with a black outline and contains a circuit pattern. The 'N' is white with a black outline and contains a circuit pattern. The background of the entire page is a dark blue hexagonal pattern. In the center, there is a large, stylized globe with a city skyline silhouette around its perimeter. The globe is composed of various shades of blue and grey, with circuit-like lines overlaid on it.

**TEFNATION**

**INFORMATION FOR  
INTERNATIONAL  
ATTENDEES**

At TFNation, we are serious about doing everything we can to provide a welcoming, accessible and inclusive environment for all of our attendees.

This pack gives a general overview of the facilities offered by the convention and our advice for international attendees.

## The Hotel

Hilton Birmingham Metropole provides an extensive offer of accommodation within 790 guest rooms and suites.

There are other Hotels within walking distance available, check out the links on our website: <https://tfnation.com/location#alternatives>.

From the Rail Station, the Hilton operates a complimentary courtesy bus to take its guests the short distance to the venue. The bus can be called by using the yellow phone next to the Subway fast food store.

Alternatively, the venue is approximately a 15 minute walk from the Rail Station.

## Travel

The hotel is located in the centre of the UK and is easily accessible by air, rail or car, whether you are travelling from North or South or internationally.

## Travel by Rail

A courtesy bus runs to and from Birmingham International Train Station. The bus can be called by using the yellow phone next to the Subway fast food store.

## Travel By Air

From Birmingham International Airport (BHX) a courtesy monorail takes passengers to Birmingham International Rail Station.

Alternatively, the venue is approximately a 15 minute walk from the Rail Station.







## Travel by Car

The hotel is located 200 yards from junction 6 of the M42 motorway and A45.  
Please use the postcode B40 1PP with your Sat Nav.

From the North

M6, then M42 exit at junction 6.

From the South

M40, M42 exit at junction 6.

M5, M42 exit at junction 6.

M1, M6, M40, M42 exit at junction 6.

## Parking

The hotel includes an award-winning 700 space "Safe Park" car park.

Parking is charged at the hotel's rate.

Should spaces fill quickly, the nearby National Exhibition Centre has thousands of parking spaces. Please visit its website for up to date pricing.

Please keep an eye on our social media accounts or join our newsletter to keep informed of any travel disruptions that may affect your journey to the convention.

## Ticket Collection

Once you have purchased your ticket online and have received confirmation of your purchase you need to do nothing until the weekend of the event.

Our Ticket Collection Desk is open on Friday morning for our weekend attendees to collect their wristbands (lanyards for children). All you will need is your confirmation email. On the email there is a bar code which we need to scan.

The email can be printed onto paper, or you can save it to a smartphone or tablet. (Smart watch screens are a little bit too small)

If you are a young adult (older than 16 but younger than 18) please bring ID to the convention, so we can double check you have the correct ticket for your age.

Do not worry if you cannot access your email on the day, your name and address should help us find your booking. Please help us by bringing some ID with you, such as a passport or driving licence, in case we require it.



## Money

A lot of our traders accept both cash and card payments. There is a cash point in the hotel lobby but it does tend to charge. Resorts World also have cash machines which currently do not charge.

## Currency

TFNation takes place in the UK where the main currency is GB Pounds Sterling (£).

Most traders will not be able to accept Euros (€) or other currencies.

Both the hotel and the nearby airport have currency exchange facilities, however, these can be quite expensive.

It is always best to buy your travel currency before your leave home to get the best value for your money.

## Languages

Most TFNation volunteers speak English as their first language, but some do also speak different languages. We attract attendees from lots of

different countries, so there are usually lots of people who can assist if you get stuck.

If you are able to communicate your first language to us, we will try our best to find somebody who can help you.

## Food

If you have purchased a special TFNation-rate room at the hotel, then free breakfast is included. If you have booked a different type of room, please double check.

The Hilton has many different styles of breakfast e.g. fried and continental.

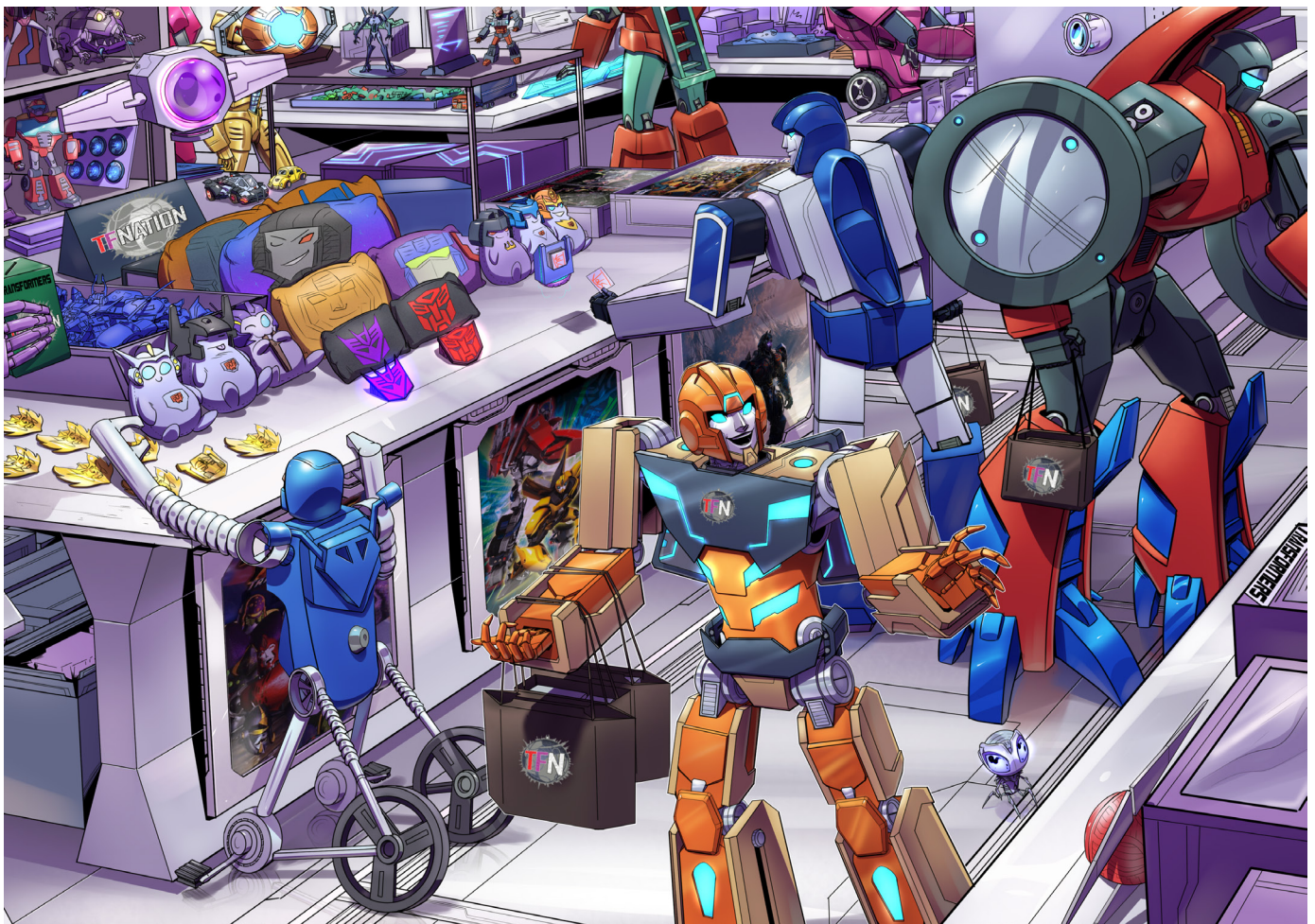
Most breakfast items are self-service, but if you require assistance the Hilton staff will be happy to help.

The Hilton supplies a range of dairy and gluten free options, as well as vegetarian and vegan options. If you have special requirements it is best to speak with the hotel before you arrive for breakfast.

There will be food vendors at appropriate times during the convention in the public areas of the







hotel. There are also the various restaurants and bars throughout the hotel.

Within walking distance of the hotel is Resorts World, which is home to a uniquely attractive retail experience. 50 outlet stores under one roof! There is also an 11 screen cinema equipped to show the latest movies in 3D and digital. Resorts World has an international range of cuisines from simple and locally sourced meals to an exciting international fusion menu.

## The Convention

All attendees at the convention tend to be warm and welcoming. Often you will find fans sitting in the communal areas of the hotel discussing transformers. Why not just stroll up and join them? Any positive comments about Transformers are bound to break the ice and start a conversation!

The programme for the weekend will inform you of all the details of what is happening where. If you are unsure of where any events are being held, please just ask one of our crew or volunteers. Also don't forget the crew on our Facebook page are always available if you have a question or want to talk.


## Volunteers

We have a large team of friendly volunteers, who will do all that they can to assist you. During the weekend they will be wearing brightly coloured t-shirts with "volunteer" or "crew" written on the m.

### ACKNOWLEDGEMENTS

Thank you to LooseScrews, Ed Pirrie, Liam Shalloo, Alex (EphDraws) Tarca & Adam Worden, for their lovely artwork.

Thanks also to Sarah Bullock for her hard work ensuring these things made sense.



# TFNATION<sup>®</sup>

TFNation is a convention celebrating The Transformers, run by fans for fans. TFNation is neither an associate of, or endorsed by, Hasbro Inc. No copyright/Trademark infringement is intended. 'TFNation', all related marks and logos are © of TFNation Ltd. The Transformers ® and all related marks, logos, and characters are Trademark of Hasbro Inc. All rights reserved.

TFNation Ltd T/A TFNation is a company registered in  
England and Wales under company number 09624206.  
Registered office: 71-57 Shelton Street,  
Covent Garden, London, WC2H 9JQ